



**Electrolux**  
PROFESSIONAL

## Standard Preparation 600 mm Open Wall Cupboard

ITEM # \_\_\_\_\_

MODEL # \_\_\_\_\_

NAME # \_\_\_\_\_

SIS # \_\_\_\_\_

AIA # \_\_\_\_\_



133254 (PA600LCN)

Open Wall Cupboard 600  
mm

### Short Form Specification

Item No. \_\_\_\_\_

Constructed in stainless steel. Back and bottom are made from a single bended stainless steel sheet for easier cleaning. Upturned panel edges. Base shelf and height-adjustable intermediate shelf. Loading capacity: 80kg.

### Construction

- Features an internal shelf which can be positioned at three different levels.
- Back and bottom panels composed of a single bended sheet for easier cleaning.

### Optional Accessories

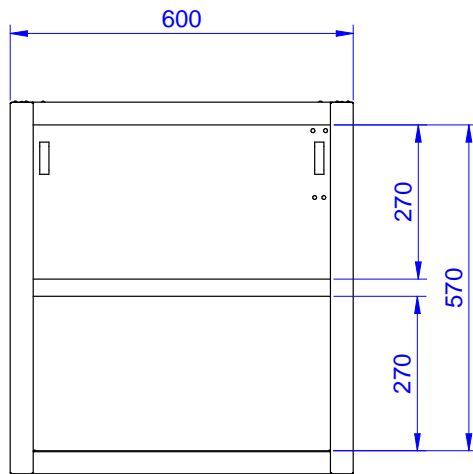
- Lighting kit with led for wall cupboards (1000mm and 1200mm) PNC 850709 ☐
- Lighting kit with led for wall cupboards (1400mm, 1600mm and 1800mm) PNC 850710 ☐

APPROVAL: \_\_\_\_\_

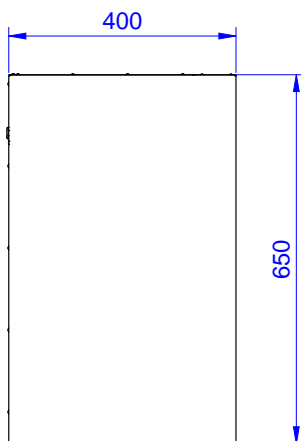


Experience the Excellence  
[www.electroluxprofessional.com](http://www.electroluxprofessional.com)

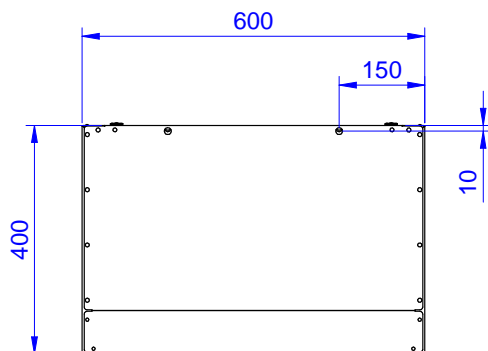
Front



Side



Top

**Key Information:**

External dimensions, Width:  
133254 (PA600LCN) 600 mm

External dimensions, Depth: 400 mm

External dimensions, Height: 650 mm